

12.10.2023

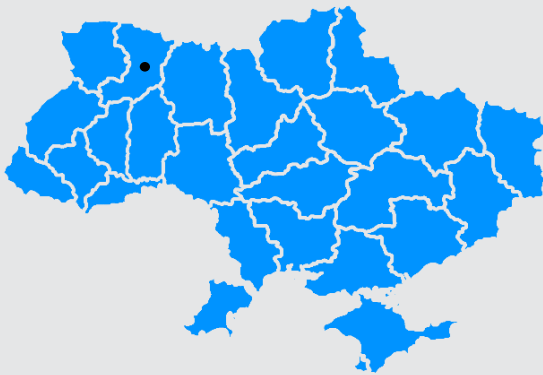
## 50% + 1 share of PJSC "Rivne Radio Engineering Plant"

USREOU code (ЄДРПОУ): 14314989

Legal address: Rivne city,  
25, Danyla Halytskoho St.



### General characteristics



**Total land area**  
**11.3834 ha**

**Total area of buildings  
and structures:**  
**68,795.00 sq. m**

**Number of employees:**  
(as of 31.08.2023):  
**0**

**The authorized capital of the Company** is divided into **44,846,377 shares** with a nominal value of **UAH 0.25**. As of August 31, 2023, 22,423,187 shares are privately owned; **22,423,190 shares (50% + 1 share) are state owned.**

**The main business activity according to the NACE:** 26.30 Manufacture of communication equipment.

**Information about the objects (real estate):** the object includes **7 registered units of real estate (6 production buildings, pumping station)** with a total area of **68,795.00 sq. m.** located at the address: Rivne city, 25, Danyla Halytskoho St.

**Information about land plots:** real estate objects owned by PJSC "Rivne Radio Engineering Plant" are located on a land plot at the address: Rivne city, 364, Soborna St., with cadastral number **561010000:01:037:0080** with a total area of **11.3834 hectares**, with a purpose of 11.02 "For the placement and operation of main, subsidiary and auxiliary buildings and structures of processing enterprises, processing machines in municipal ownership". A dog kennel is located on the specified land plot. The land plot also contains real estate owned by third parties.

**On the balance sheet of the enterprise there are assets that are not subject to privatization**, namely: a shelter with a total area of **2555.5 sq.m.** The civil defense facility is the basement of a factory building No.2.

**Information on legal disputes:** there are legal disputes in which the Company is a participant.



In accordance with the requirements of Article 20 of the Law of Ukraine "On Privatization of State and Municipal Property" in cases provided by the legislation on protection of economic competition, the buyer must obtain permission from the Antimonopoly Committee of Ukraine to directly or indirectly acquire assets in the form of a property complex or structural business unit (hereinafter - the concentration permit). The procedure for filing and reviewing an application for a concentration permit is established by the legislation on the protection of economic competition.

Due to fact that PJSC "Rivne Radio Engineering Plant" has not carried out economic activities since 2013, was subsequently declared bankrupt, and also did not transfer the primary accounting and financial documents of the Company from the previous management to the liquidator, financial statements were not generated and submitted during the bankruptcy procedure.

### Main financial indicators:

#	Indicators (thousand UAH)	As of 31.08.2023
<b>1.</b>	<b>Assets</b>	<b>243,117.2</b>
1.1	Non-Current assets	243,117.2
1.2	Current assets	0.00
<b>2.</b>	<b>Liabilities</b>	<b>243,117.2</b>
<b>3.</b>	<b>Total income, including:</b>	-
3.1	Net income from sales of products (goods, works, services)	-
<b>4.</b>	<b>Total costs, including:</b>	-
4.1	Cost of goods sold (goods, works, services)	-
4.2	Administrative costs	-
4.4	Other operating costs	-
4.6	Income tax expenses	-
<b>5.</b>	<b>Net profit (loss)</b>	-

### As of 30.06.2023:

**Accounts payable – UAH 18,501.3 thousand, including:**

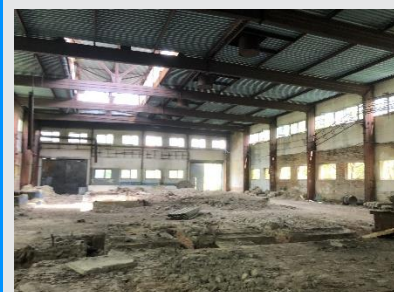
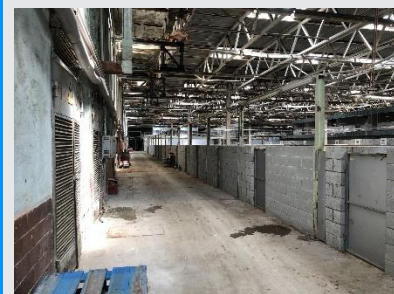
- wage arrears – **UAH 12,479.8 thousand;**
- insurance settlements – **UAH 1,122.0 thousand;**
- settlements with the budget – **UAH 1,831.1 thousand;**
- goods, works, services – **UAH 3,068.4 thousand.**

**The Company does not emit or discharge pollutants into the environment.**

**Information about the presence/absence of mobilization tasks:** there are no mobilization tasks (orders) in the company.

### Privatization conditions:

- repayment of debts on wages and to the budget within 6 months.



### Contacts

**SPFU Contact center:**  
**+380-800-50-56-46**

[privatization@spfu.gov.ua](mailto:privatization@spfu.gov.ua)

**Asset information:** <http://surl.li/mbrbt>

